

# High-Density Bulkhead Fiber Optic Splitters

Chassis and Modules; Standard 4 RU Footprint; Industry-Leading Density

## Overview

Telect's HDX high-density bulkhead-style fiber optic splitter solution (patent pending) provides cost-effective industry-leading splitter density in a standard 4 RU footprint. Each 23-inch chassis accommodates up to 32 modules (19-inch chassis holds 24 modules). Splitter modules are available in a variety of configurations and split ratios (1 x 2, 1 x 3, 2 x 2, etc.).

Telect splitter modules enable non-intrusive optical circuit testing and monitoring without sacrificing significant space. These passive component modules feature a robust design for durability and protection of circuits.

## Chassis Features

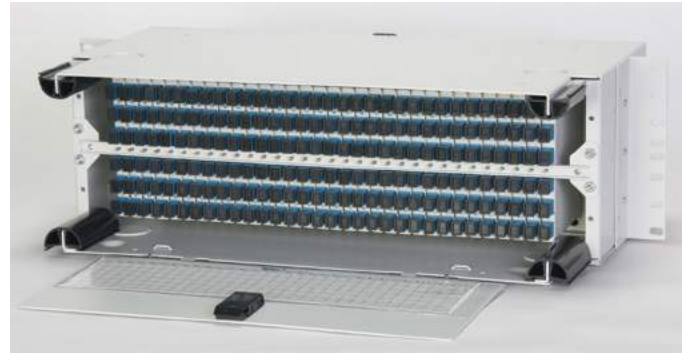
- Compliance in design
  - Bend radius management
  - Flammability safety
  - Structural reliability
  - Standard footprint
- Lightweight construction
- Simple installation
- Scalable to help manage costs

## Splitter Module Features

- High density — up to six ports on front and rear
- Capacity — up to three 1 x 2 splitters per module
- Maximum density of 96 splitters in a 4 RU chassis

## Applications

- CATV
- MTSO
- Outside plant
- Central office
- Optical distribution
- Circuit monitoring



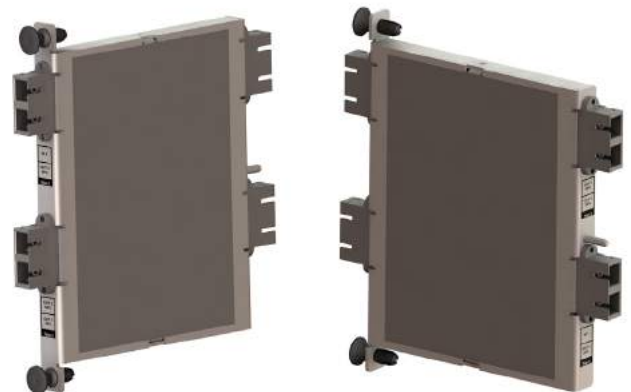
Rear View, Loaded Panel



Front View, Unloaded Chassis



Rear View, Loaded Panel



Splitter Module Rendering, Front and Rear Views

# High-Density Bulkhead Fiber Optic Splitters

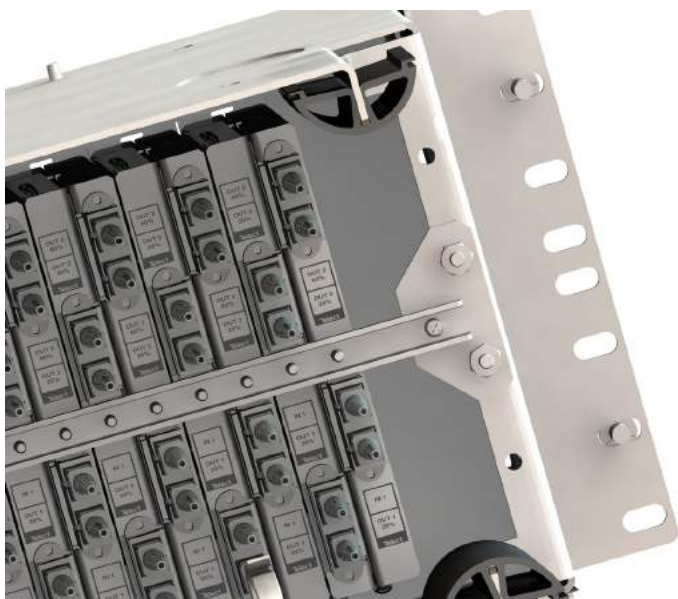
Chassis and Modules; Standard 4 RU Footprint; Industry-Leading Density

## Ordering Information

Chassis/Panels	Part Number
4 RU Standard 23" chassis	HDX-M4RU-230
4 RU ADC®-FL2000 compatible 23" chassis, rear-mount configuration	HDX-FL4RU-230
4 RU ADC®-FL2000 compatible 23" chassis, front-mount configuration	HDX-FM4RU-230
4 RU Standard 19" chassis	HDX-M4RU-190
Splitter Modules	Part Number
Dual 1x3, 60/20/20, Even, SC/UPC	HD56-4862-6161-SEN
Dual 1x3, 60/20/20, Odd, SC/UPC	HD56-4862-6161-SOD
Dual 1x3, 60/20/20, Even, ST/UPC	HD56-4862-3131-SEN
Dual 1x3, 60/20/20, Odd, ST/UPC	HD56-4862-3131-SOD
Triple 1x2, 90/10, Standard, SC/UPC	HD56-4T19-6161-SEN
Triple 1x2, 80/20, Standard, SC/UPC	HD56-4T28-6161-SEN
Accessories	Part Number
Cable management hook kit, front panel	KIT-CMHOOK
Cable exit arc	KIT-CMARC
Bonding/grounding kit	KIT-BOND

All trademarks and registered trademarks included in this document are the property of their respective owners.

**For different connectors, split ratios, and I/O/Monitor configurations, call Telect: 800.551.4567.**



Offset odd and even orientation of modules provides easier access to connect/disconnect ports.

## Specifications

### Mechanical

Dimensions	19" or 23" W x 6.75" H x 10.75" D (483 or 584 mm x 171 mm x 273 mm)
Weight	Approximately 18 lbs. (8.2 kg) loaded
Mounting	19" or 23" racks
Material	Aluminum
Finish	Powder coat
Minimum bend radius	30 mm throughout panel

### Connections

Termination count	Up to 96 inputs per chassis
Termination type	SC/UPC, SC/APC, ST/UPC and LC/UPC

### Environmental

Operating temperature	-5° to 55° C
Operating humidity	0% to 90%, non-condensing

### Environmental

Split ratio	Various configurations available
Operating wavelength	1310 nm and 1550 nm
Operating bandwidth	±40 nm
Bandpass	1310/1550 ±20 nm
Directivity	50 dB

Insertion loss	50/50: ≤ 3.9/3.9dB
	55/45: ≤ 3.4/4.3dB
	60/40: ≤ 3.0/5.0dB
	65/35: ≤ 2.6/5.5dB
	70/30: ≤ 2.2/6.3dB
	75/25: ≤ 1.9/7.0dB
	80/20: ≤ 1.5/8.2dB
	85/15: ≤ 1.3/9.3dB
	90/10: ≤ 0.95/11.6dB
	95/5: ≤ 0.7/14.9dB
Polarization loss	33/33/33: ≤ 6.0/6.0/6.0dB
	25/25/25/25: (PLC) ≤ 7.5/7.5/7.5/7.5dB
	20/20/20/20/20: ≤ 9.0/9.0/9.0/9.0/9.0dB
	60/20/20: ≤ 3.2/8.8/8.8dB

Polarization loss 0.1 dB maximum

Return loss >55 dB



Rear View Detailing Support Bar for Modules