

## DESCRIPTION

Custom Cable offers a complete range of robust rack mount panels, designed using high-grade steel and aluminum with a hinged plexiglass front safety door. The panels have been designed to accept MTP cassettes or LGX style adapter plates in a wide variety of configurations. Incorporating one of our multifunctional panels allows easy access during installation or rework with no disturbance to the existing cable or fibers.

Our family of panels also offer multiple cable entry solutions allowing MTP trunks, pre-terminated cables or LT/TB/breakout cables to be easily connected internally making this panel one of the most flexible on the market.

## APPLICATIONS

- Data centers, premise installations, telecommunication networks
- Ethernet, Fiber Channel, ATM, LAN, MAN and WAN

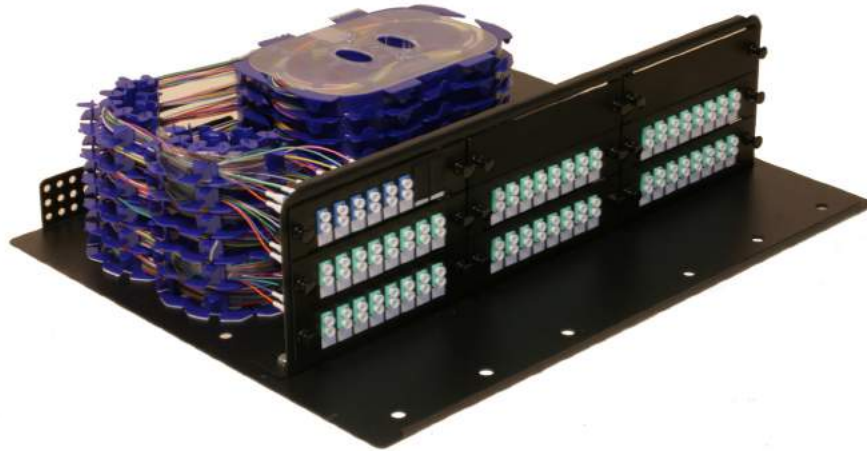
## FEATURES AND BENEFITS

- 16 gauge cold rolled steel construction
- Powder coat black finish
- Hinged front plexiglass door
- Flexible mounting for 19" or 23" racks
- Aluminum slide rails
- Sliding tray with integrated spring loaded tray retainer for ease of installation
- Accepts LGX MTP cassettes or LGX adapter plates
- Multiple adapter options available, loaded or unloaded
- Assortment of strain relief and fiber routing accessories provided
- Splice cassette, bridge and tray options available
- Side patch cord exit points
- Removable quick access top covers
- Removable front
- Accepts loose tube, distribution cable and MTP trunk cable
- ROHS, REACH SvHC



## DATA SHEET

### Rack Mount Panels



Product Specifications	1U Rack Mount Panel	2U Rack Mount Panel	3U Rack Mount Panel	4U Rack Mount Panel
Height	1.75" (44.4mm)	3.5" (88.9mm)	5.25" (133mm)	7" (178mm)
Width	17" (432mm)	17" (432mm)	17" (432mm)	17" (432mm)
Depth	14" (356mm)	14" (356mm)	14" (356mm)	14" (356mm)
Net weight	13lbs (5.9kg)	16.5lbs (7.5kg)	17.5lbs (8kg)	20lbs (9kg)
Suitable for adapter type	LGX / MTP Cassettes	LGX / MTP Cassettes	LGX / MTP Cassettes	LGX / MTP Cassettes
Number of module positions	3	6	9	12
Material	Cold-rolled steel	Cold-rolled steel	Cold-rolled steel	Cold-rolled steel
Material thickness	16 Guage	16 Guage	16 Guage	16 Guage
Material finish	Powder coating	Powder coating	Powder coating	Powder coating
Color	RAL 9004	RAL 9004	RAL 9004	RAL 9004
Operating temperature	-40C to +60C (-40F to +140F)	-40C to +60C (-40F to +140F)	-40C to +60C (-40F to +140F)	-40C to +60C (-40F to +140F)
Designed in accordance with	TIA/EIA 568.C, ISO/IEC 11801, EN50173, IEC60304, IEC61754,EN297-1	TIA/EIA 568.C, ISO/IEC 11801, EN50173, IEC60304, IEC61754,EN297-1	TIA/EIA 568.C, ISO/IEC 11801, EN50173, IEC60304, IEC61754,EN297-1	TIA/EIA 568.C, ISO/IEC 11801, EN50173, IEC60304, IEC61754,EN297-1
Compliant to	RoHS, Reach/SVHC	RoHS, Reach/SVHC	RoHS, Reach/SVHC	RoHS, Reach/SVHC

© 2013 Custom Cable. All rights Reserved.

Notice: This document is for informational purposes only and does not set forth any warranty, expressed or implied, concerning any equipment, equipment features, or services to be offered by Custom Cable. Custom Cable reserves the right to make changes to this document at any time, without notice, and assumes no responsibility for its use. This informational document describes features that may not be currently available. Contact Custom Cable's Sales team for information on feature and product availability. Export of technical data contained in this document may require an export license from the US government.